



Patch panel

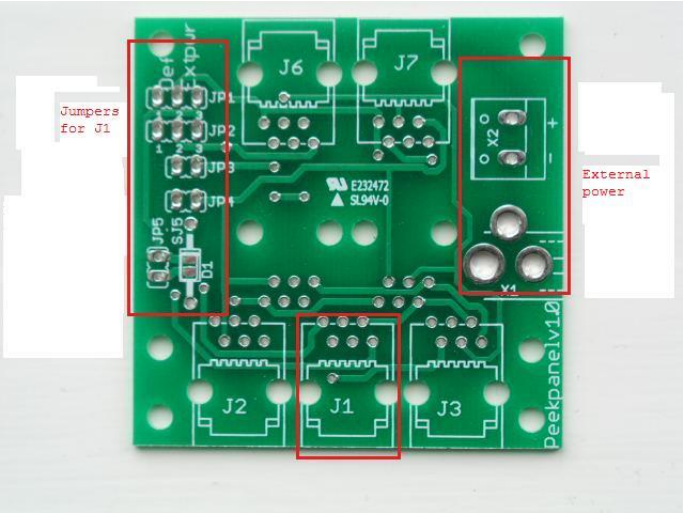
Peek panel ver. 1.0

Patch panel for LocoNet and Expressnet

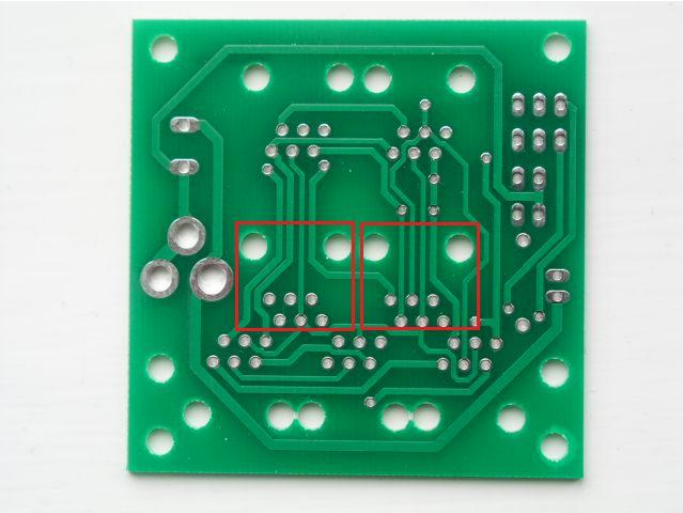
Per
2009-07-12

Configuration of the Patch panel

Front side



Back side

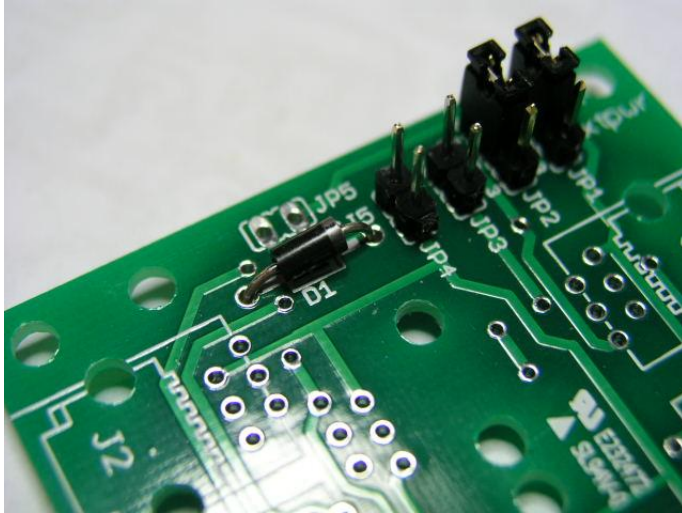


Basic configuration

All RJ-12 connectors are linked together pin to pin except for J1.
If you don't need to use J1 or you don't need external powers for LocoNet then you can just solder the RJ-12 connectors where they fit best for your purpose. This is for both LocoNet and Expressnet.

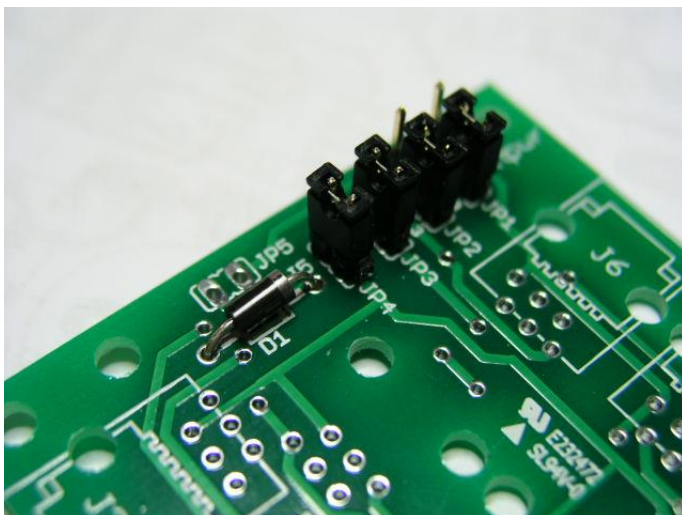
Using J1 without external power

Here you must connect pin1 and pin2 on JP1 and JP2. They are labeled Def. on the PCB. This configuration makes J1 behave just as all other RJ-12 connectors. Diode D1 is not necessary. This works for both Loconet and Expressnet.

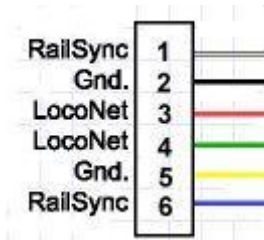


Using J1 with external power. LocoNet only

In this case you should connect pin2 and pin3 on JP1 to JP4. They are labeled Extpwr. On the PCB. This connect pin1 and pin6 (railsync on LocoNet) to plus on external power and pin1 and pin6 on J1 are not connected to anything. If you shall plug in a booster you shall plug it in J1 so the railsync will not be disturbed. Here you must also use diode D1 (recommended) or connect jumper JP5. Pin2 and pin5 (Gnd on LocoNet) will also be linked together.



LocoNet pins



Schema

